



GAT MONTHLY MEMBERSHIP PROGRESS REPORT

Results as of: 6/30/2024

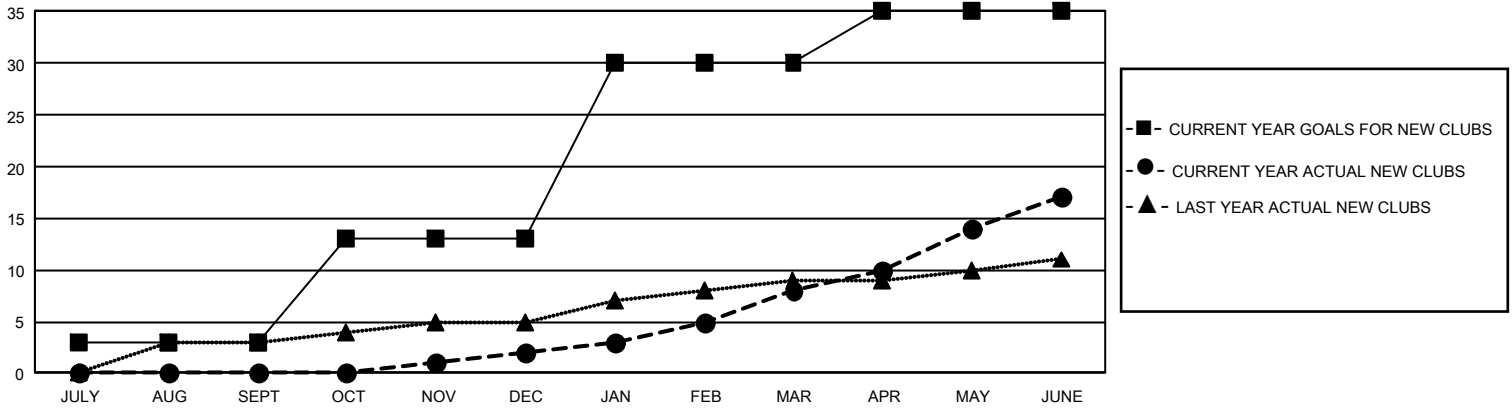
GMT Constitutional Area 1, Group F

REPORT DOES NOT INCLUDE CLUBS IN UNDISTRICTED AREAS.

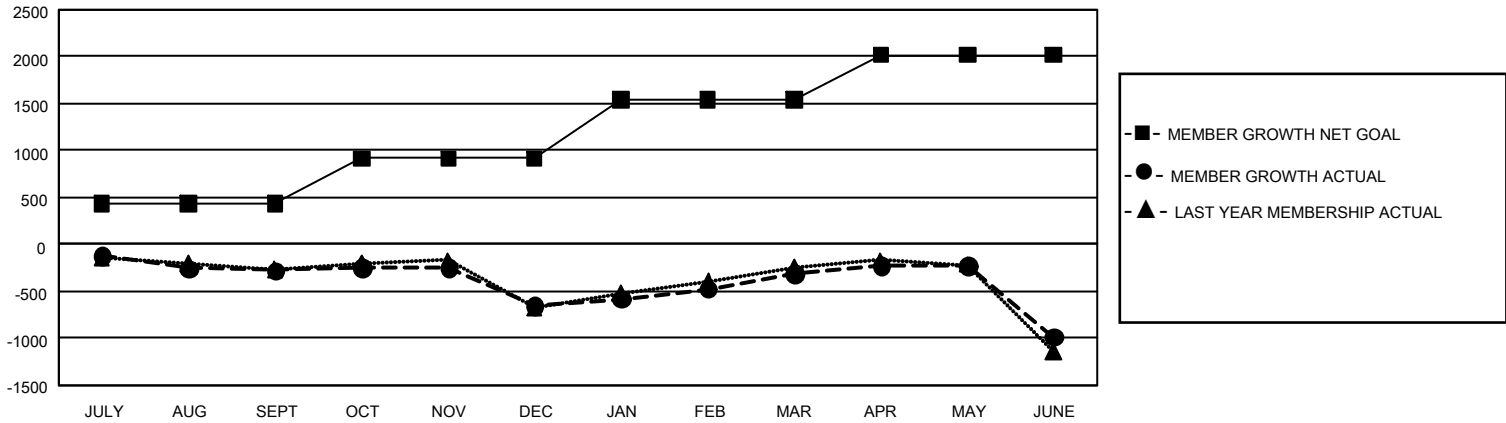
Clubs			
RESULTS FOR 2023-2024			
QUARTER	NEW CLUB GOAL	NEW CLUBS	DROPPED CLUBS
JULY/AUG/SEPT	9	0	7
OCT/NOV/DEC	30	2	16
JAN/FEB/MAR	51	6	5
APR/MAY/JUNE	15	9	20

Members			
RESULTS FOR 2023-2024			
QUARTER	MEMBER GROWTH NET GOAL	MEMBER GROWTH ACTUAL	DROPPED MEMBERS ACTUAL (including transfers)
JULY/AUG/SEPT	431	869	1,036
OCT/NOV/DEC	487	987	1,276
JAN/FEB/MAR	623	1,175	739
APR/MAY/JUNE	475	1,337	1,875

GOALS AND ACTUAL NEW CLUBS CUMULATIVE



GOALS AND ACTUAL MEMBERS CUMULATIVE



DROPPED CLUBS: 48	882 CLUBS OF 1,421 ADDED 1 OR MORE NEW MEMBERS	<u>GENDER DISTRIBUTION</u>	
		MALE 23,361 (59.99%)	FEMALE 15,555 (39.94%)
<u>DROPPED MEMBERS</u>		NON BINARY 1 (0.00%)	PREFER NOT TO ANSWER 26 (0.07%)
DECEASED 579	CLICK HERE FOR CUMULATIVE MEMBERSHIP DATA	TOTAL FAMILY UNIT MEMBERS 7,446	
CLUB CANCELLED 355		FAMILY MEMBERS PAYING HALF DUES 3,883	
OTHER 3,972			
TOTAL 4,906			